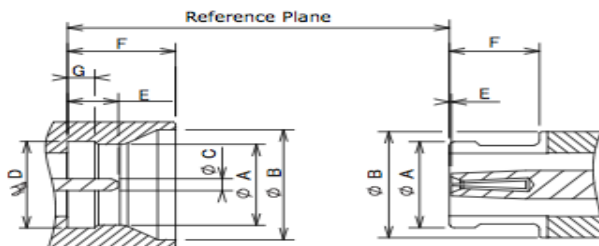


* SMMP Connector/Adaptor



	Male		Female	
	min.	max.	min.	max.
A	2.11	2.16	-	2.41
B	2.82	2.92	-	2.79
C	0.28	0.33	-	-
D	2.18	2.24	-	-
E	0.76	1.14	0.00	0.20
F	2.08	2.13	1.73	-
G	0.53	0.58	-	-

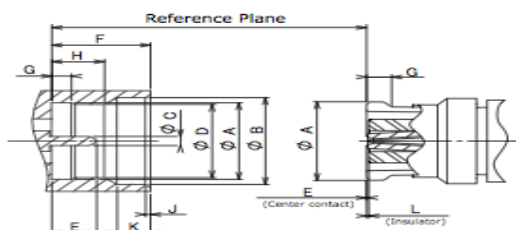


Electrical Characteristics		
50Ω	Impedance	
65GHz	Frequency Range	
160Vrms	Voltage Rating	
≤1.5 at 65GHz	VSWR	
5000MΩ	Insulation Resistance	
500Vrms	Dielectric Withstanding Voltage	
≤6.0mΩ	Center	Contact Resistance
≤2.0mΩ	Outer	Contact Resistance
Mechanical Characteristics		
≤19N	Force to Engage	
≥29N	Force to Disengage	
100 cycles	Durability	
-55°C~+155°C	Operating Temperature	
Materials		
Brass, Kover	Plug	Body
Beryllium Copper	Jack	Body
Phosphor Bronze	Male	Center Contact
Beryllium Copper	Female	Center Contact
PTFE, Glass	Insulator	
Finish		
Gold Plating	Body	
Gold Plating	Center Contact	

* SMP Connector/Adaptor



	Male		Female	
	min.	max.	min.	max.
A	3.15	3.21	-	3.43
B	3.53	3.69	-	-
C	0.35	0.41	-	-
D	3.00	3.10	-	-
E	1.14	1.40	0.00	0.20
F	2.74	2.84	-	-
G	0.53	0.59	0.64	0.89
H	1.38	1.52	-	-
J	0.08	0.20	-	-
K	0.84	0.94	-	-
L	-	-	0.00	-



Electrical Characteristics		
50Ω	Impedance	
40GHz	Frequency Range	
335Vrms	Voltage Rating	
≤1.5 at 40GHz	VSWR	
5000MΩ	Insulation Resistance	
500Vrms	Dielectric Withstanding Voltage	
≤6.0mΩ	Center	Contact Resistance
≤2.0mΩ	Outer	Contact Resistance
Mechanical Characteristics		
≤44N	Force to Engage	
≥9N	Force to Disengage	
100 cycles	Durability	
-65°C~+165°C	Operating Temperature	
Materials		
Brass, Kover	Plug	Body
Beryllium Copper	Jack	Body
Phosphor Bronze	Male	Center Contact
Beryllium Copper	Female	Center Contact
PTFE, Glass	Insulator	
Finish		
Gold Plating	Body	
Gold Plating	Center Contact	